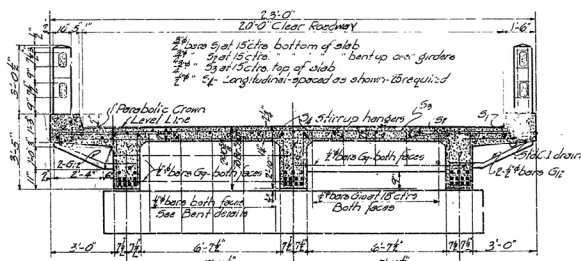
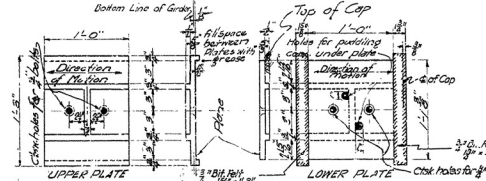


HALF REAR ELEV. OF END BENT
Scale 1/4" = 1'-0"

LONGITUDINAL SECTION ALONG ϕ OF ROADWAY

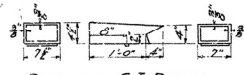


HALF SECTION B-B HALF SECTION A-A

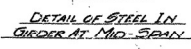


DETAILS OF BRONZE EXPANSION PLATE

General Notes
All exposed corners to be 1/4 chamfer unless otherwise noted.
Protect Concrete Handrails to be 1/4" min. Min. width 8"
Concrete above top of 24" Cops, except for 1/4" to be
Class 2.
Reinforcing steel to be all "rod bars of structural"
steel. All reinforcement shall be tested by a test agency to be
submitted by the Contractor before placement is begun.
Volume of Cops headers is included in volume of
Class 2 Concrete.
Specifications: American note Bridge specifications
adopted May 30, 1975 and revised.
Unit: American units, 1000' = 1000'; 1" = 1"; the leading
all dimensions are relating to reinforcing steel, not to
centers of bars.
Cast from drains are to be paid for at the unit price
bid for Cast Iron and Cast Steel.
Bronze or Aluminum Drain bolts and Copper Water
Stop are to be paid for at the unit price bid for Bronze
Expansion.
Bolts for Cops headers and Aluminum fill are to be
paid for at the unit price bid for reinforcing steel.



DETAILS OF C.I. DRAIN
Scale 1"=1'-0"



DETAIL OF STEEL IN
GIRDER AT MID-SPAN

N. A. Eaves
BRIDGE ENGINEER

STANDARD 35'0" RC DECK GIRDER
3 GIRDER TYPE
20'0" CLEAR ROADWAY
ARKANSAS STATE HIGHWAY COMMISSION
LITTLE ROCK, ARK.
Drawn By: Duncan Date: 2-28-68
Traced By: Good Date: 2-28-68
Checked By: Good Date: 2-28-68
Scale: as shown
BRIDGE NO. 1484 DRAWING NO. 2274